



# MONTHLY MEMBERSHIP PROGRESS REPORT

District 42

Results as of: 12/31/2018

GMT: MAHESH CHITNIS

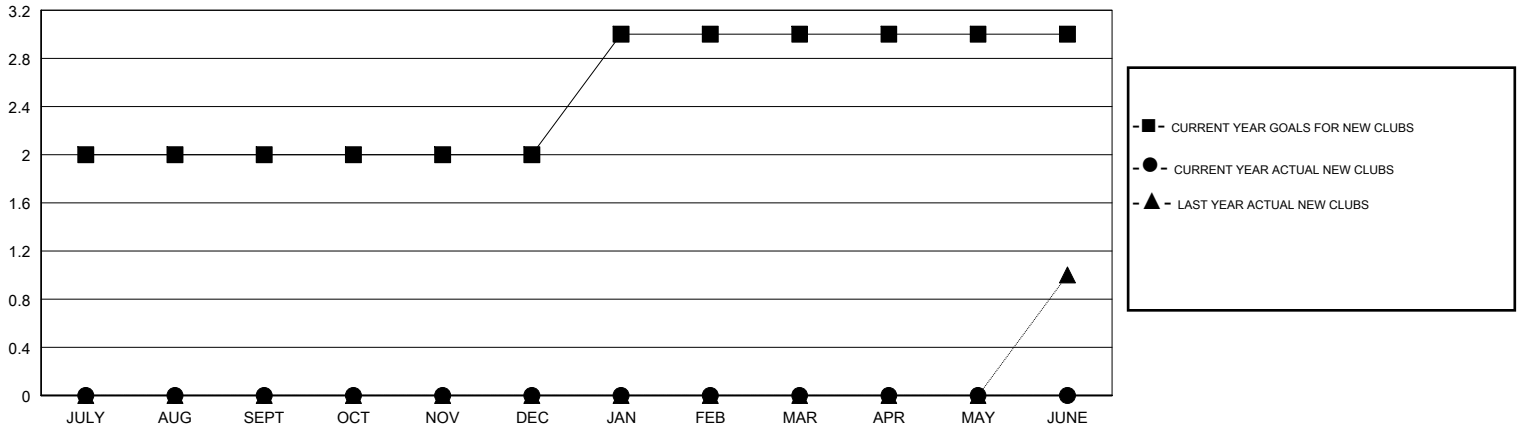
LOCATION RHODE ISLAND

GMT CA

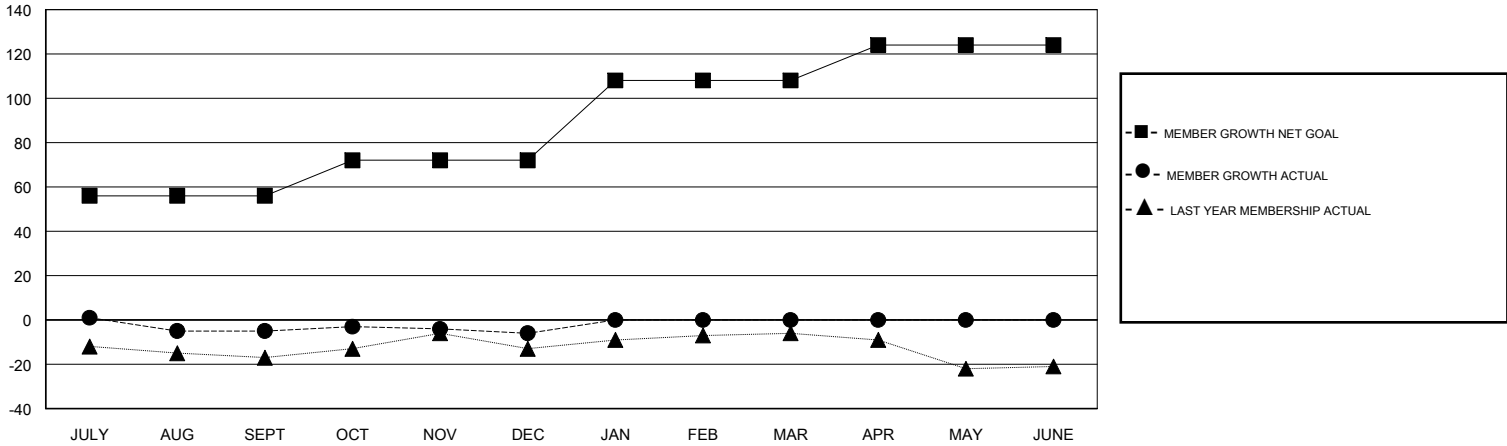
Clubs			
RESULTS FOR 2018-2019			
QUARTER	NEW CLUB GOAL	NEW CLUBS	DROPPED CLUBS
JULY/AUG/SEPT	2	0	0
OCT/NOV/DEC	0	0	0
JAN/FEB/MAR	1	0	0
APR/MAY/JUNE	0	0	0

Members			
RESULTS FOR 2018-2019			
QUARTER	MEMBER GROWTH NET GOAL	MEMBER GROWTH ACTUAL	DROPPED MEMBERS ACTUAL (including transfers)
JULY/AUG/SEPT	56	10	14
OCT/NOV/DEC	16	20	20
JAN/FEB/MAR	36	0	0
APR/MAY/JUNE	16	0	0

GOALS AND ACTUAL NEW CLUBS CUMULATIVE



GOALS AND ACTUAL MEMBERS CUMULATIVE



DROPPED CLUBS: 0	10 CLUBS OF 30 ADDED 1 OR MORE NEW MEMBERS	<u>GENDER DISTRIBUTION</u> MALE 810 (71.94%) FEMALE 316 (28.06%) Women Percentage Fiscal Year Goal: 30%
DROPPED MEMBERS	<a href="#">CLICK HERE FOR CUMULATIVE MEMBERSHIP DATA</a>	TOTAL FAMILY UNIT MEMBERS 135
DECEASED 2		FAMILY MEMBERS PAYING HALF DUES 71
CLUB CANCELLED 0		
OTHER 32		
TOTAL 34		